

www.trustcapitalproperty.es

Tel +34 972 858 281

info@trustcapitalproperty.es

Detached house or villa for sale on Avenida del Pla de Rosell

Referencia C1111

820.000€

Lloret de Mar

Houses



4



4



293 m2



863 m2

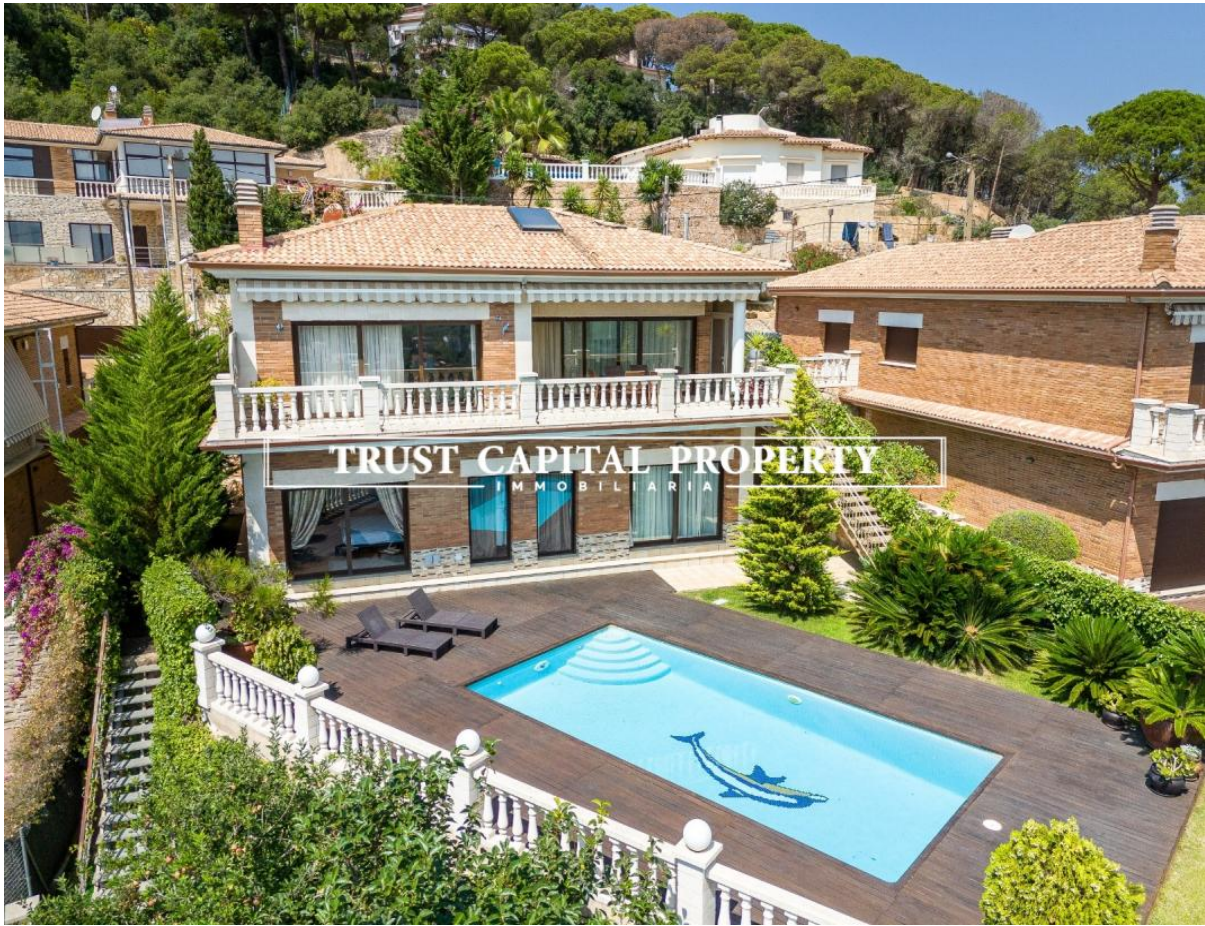
Villa with a tourist license and unbeatable views of the sea and mountains. Built with high-quality materials, it features 4 bedrooms, 4 bathrooms, a fully equipped kitchen, jacuzzi, swimming pool, barbecue area, and a garden with fruit trees. It also includes a garage, storage room, and terrace. South-facing, with diesel central heating and a plot of 863 m². Perfect for enjoying comfort and nature.

Basic features

- Detached house or villa
- 2 floors
- 293 m² built area
- 4 bedrooms
- 4 bathrooms
- 863 m² plot
- Terrace and balcony
- Second-hand / good condition
- Storage room
- South-facing
- Built in 2010
- Central heating: Diesel

Amenities

- Swimming pool
- Garden





TRUST CAPITAL PROPERTY
IMMOBILIARIA



TRUST CAPITAL PROPERTY
IMMOBILIARIA



